





---

---

---

---

---

56

B J

G

---

---

---



MĚ•

7!  $\hat{p}f \in P$  ( $1^{\wedge}ypD\sim\langle$  —





M

000000 123456

M M

c

s

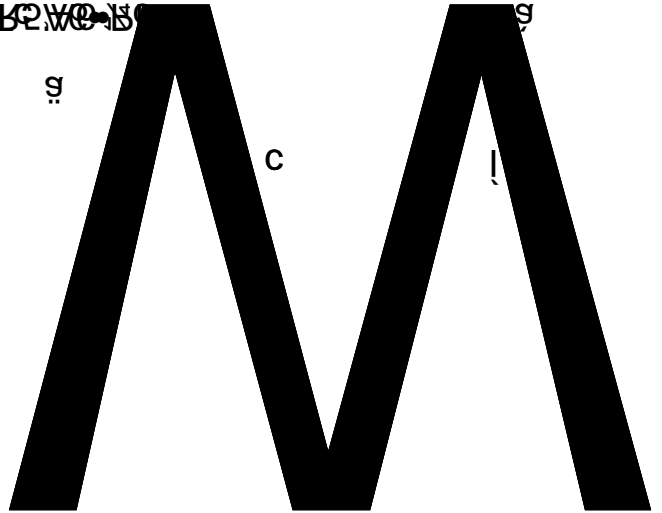
c

!

A M

M

-•



000000 123456















---

# #







...E

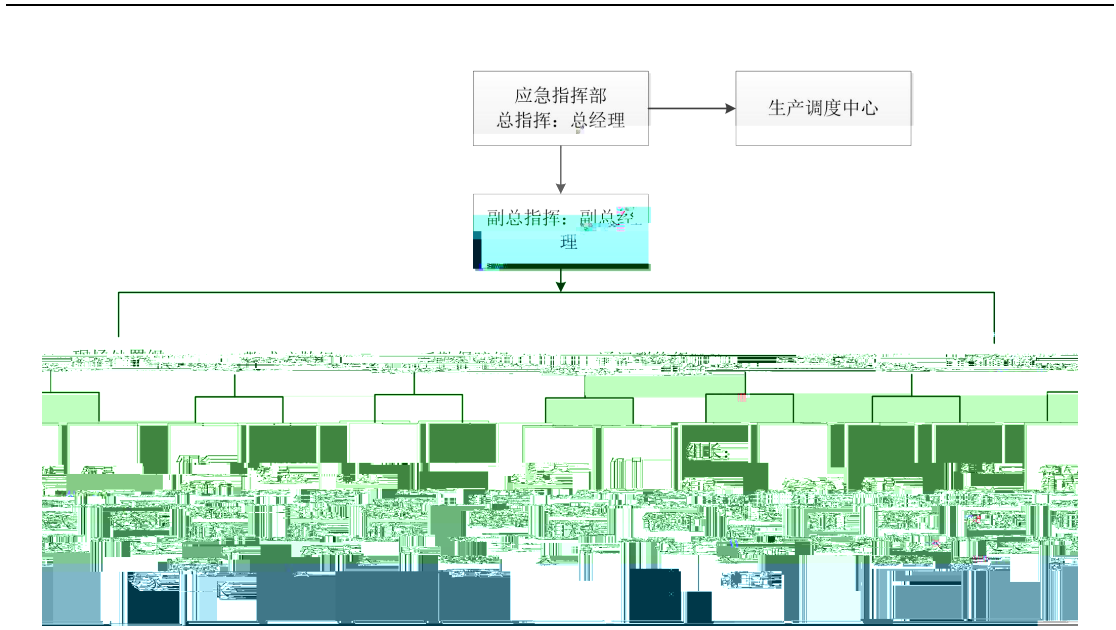
№]

c

d



















+10 @ 9.200 B5.00 ]  
10.0 @ 10.000 B5.00 ]

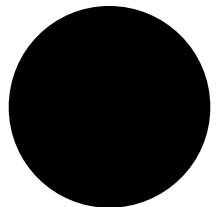
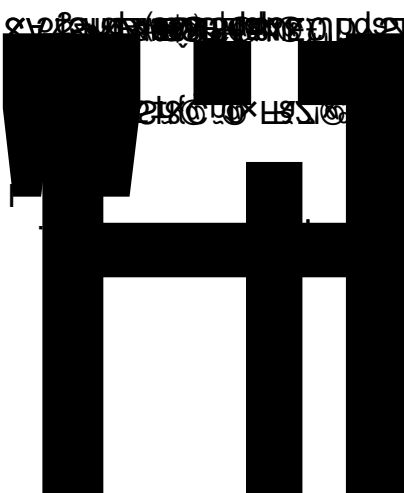
• 10.0 @ 10.000 B5.00 ]

20.0 @ 10.000 B5.00 ]

"1.5" 1/4"

8

8.5" 1/4" A f 0.5" 1/4"





---

„Ey~→D“ É

© Àp(i—5p4^ — D[e€yxFä

ë



---

O

O

Q

5 erid.d(661) è











---

” q  
” q























